

# Ascend Weather Stations



## Built for your operations

- Rugged sensors built for demanding environments
- Configurations tailored to industry applications
- Scalable stations that expand with your needs



## ASK ABOUT: U[SONIC] WS7

Purpose-built for critical operations, the u[sonic] WS7 delivers trusted measurements while minimizing downtime and cost.

## Resilient operations start with trusted weather data

Every decision — from keeping the grid safe to protecting workers and infrastructure — depends on accurate, site-specific conditions. But too many organizations rely on incomplete or unreliable data that leaves operators exposed. The Ascend Weather Station gives you rugged, precise, and defensible data designed for tough environments, so you can protect people, assets, and uptime with confidence.

### Informing essential weather-driven decisions

- ✓ Keeping operations efficient and reliable
- ✓ Optimizing energy output and performance
- ✓ Protecting workers in hazardous conditions
- ✓ Meeting regulatory and compliance requirements

### KEY BENEFITS



Protect people and assets with accurate, site-specific weather data that supports safer operations in high-risk environments.



Keep operations running by reducing weather-related disruptions and making confident decisions when conditions change quickly.



Defend critical decisions with trusted, defensible data that supports compliance, reporting, and stakeholder confidence.



Save time and effort through low-maintenance, deployment-ready stations engineered for demanding environments.

# Built to meet the demands of industry-specific operations

Every sector faces its own weather risks, from transportation delays to worker safety hazards, from wildfire ignitions to energy disruptions. Ascend Weather Stations are configured for your environment, with rugged sensors and tailored designs that deliver the precise data your operations depend on.

## 1. Energy Utilities

Hyperlocal fire weather monitoring to support PSPS and grid safety.

- 1-minute data updates for faster PSPS decisions
- Durable, ultrasonic sensors for reliable accuracy
- Pole-mounted design for deployment across the grid



## 2. Maritime

Rugged monitoring for safer port and vessel operations.

- Seawater-resistant stations built to withstand storms and salt exposure
- Multi-parameter measurements for precise weather and water conditions
- Low-maintenance design for reliable long-term deployment



## 3. Renewable Energy

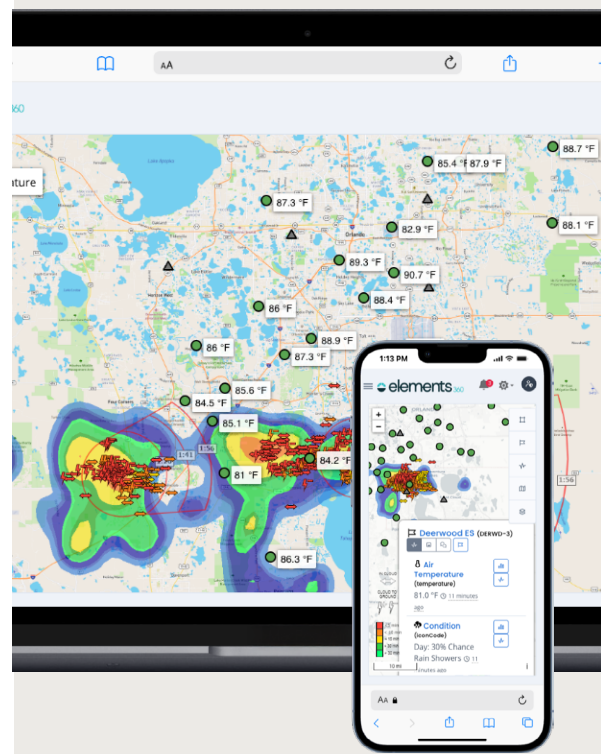
Accurate weather data to maximize energy output and protect assets.

- Solar and wind monitoring to optimize production efficiency
- Rugged sensors track conditions that strain equipment over time
- Site assessment to identify the best locations for solar and wind installations



The command center of your weather monitoring network

- Combine Ascend station data with forecasts and other trusted sources to **see all your data in one place**
- Gain instant awareness with **clear dashboards and maps** that track changing weather across your operations
- Stay focused with **smart, configurable alerts** that minimize false alarms and highlight real risks



**PUT RELIABLE WEATHER DATA TO WORK FOR YOUR OPERATIONS.**

Reach out to AEM's experts at [info@aem.eco](mailto:info@aem.eco) to learn how Ascend Weather Stations can help you protect people, assets, and uptime.