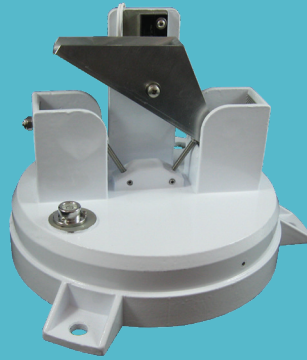


8-inch Tipping Bucket Rain Gauge

Model 2408 SERIES



Mounting options include, pole, telemetry cabinet, and mounting plate.



Description

The 2408 Series Tipping Bucket Rain Gauge comprises a powder-coated 8-inch (20.32 cm) diameter aluminum tube, a cast aluminum base section with machined aluminum tipping bucket, an 8-inch (20.32 cm) diameter funnel, and a Tip Rate Compensator.

The 2408 Series includes a magnetically operated sealed reed switch, which provides a reliable normally open, momentary switch closure for transmission or recording by a monitoring device that will accept an accumulator input. A bull's eye level is provided for leveling at the installation site.

A Tip Rate Compensator (TRC) has been incorporated into the Model 2408 Rain Gauge. The TRC is designed to add a correction to the accumulated rain totals to compensate for very high rain rates. This product is designed to factor in losses in collected water that occur each time the tipping bucket passes through the center point. A small volume of water is not collected as it flows into the bucket side that has already been counted.

The 2408 Series have a built-in level indicator, pre-drilled tabs for mounting and threaded drain holes. An optional secondary storage system can be installed to the threaded drain holes for capturing rainfall volume. All components of the 2408 Series are capable of withstanding repeated freezing and thawing. The funnel is made from Xenoy™ resin, which is specifically formulated for harsh conditions. The gauge comes complete with a debris filtering screen and a 25 ft (7.6 m) signal cable with strain relief.

Key features:

- 8-in. (20.32 cm) orifice
- Accuracy of $\pm 1\%$ for 0 to 10 inches per hour
- Event resolution: 0.01 in.
- Quality construction
- Corrosion-resistant materials

BENEFITS



Combine with Advanced Warning Systems to help predict possible flash flood events.



Record rainfall fluctuations from year-to-year to make better water management decisions.



Use as an effective tool for Stormwater Management to determine possible sewer overflows.

Specifications 8-inch Tipping Bucket Rain Gauge

COMPONENT	SPECIFICATION
Event resolution	0.01 inches (0.254 millimeters)
Accuracy	± 1% for 0 to 10 in. per hour (0 to 254 mm/hr)
Oriface diameter	8 in. (20.3 cm)
Sensor element	Magnetically operated reed switch
Signal output	Normally open - momentary contact closure
Power	4 to 20 VDC @ <100uA
Operating temperature	32° to 122° F (0° to 50° C)
Storage temperature	-58° to 158° F (-50° to 70° C)
Drain holes	Threaded
MOUNTING	
Bolt circle	9.2 in. (23.368 cm) at 120° apart diameter
MATERIALS	
Funnel	Xenoy™ resin
Sensor housing	Aluminum
Base	Cast aluminum
Cable length	25 ft. (7.6 m)
Dimensions	8 x 12.5 in. (20.3 x 31.8 cm) (Dia. x H)
Weight	6 lbs (2.7 kg)
Shipping weight	9 lbs (4.1 kg)

ORDERING GUIDE	
Model 2408-00	Rain Gauge, 8-in. (20.3 cm), Cal: 0.01 in. (0.254 mm)/tip, includes: Tipping Bucket Mechanism, Sensor Housing, 25 ft. (7.6 m) Cable with a MS Connector and Tip Rate Compensator. <i>Note: Mounting Plate sold separately.</i>
Model 2408-03	Rain Gauge, 8-in. (20.3 cm), Cal: 0.01 in. (0.254 mm)/tip, includes: Tip Bucket Mechanism, Sensor Housing, 25 ft. (7.6 m) Cable with Tinned Leads and Tip Rate Compensator. <i>Note: Mounting Plate sold separately.</i>

OPTIONS / SPARE PARTS	
Model 2408-01	Mounting Plate: Pole Mount with 1.5 in. (3.81 cm) threaded. Flange to be used with 2408 Rain Gauge. To fit onto a 1.5 in. (3.81 cm) threaded pole.
Model 2408-02	Mounting Plate: Cabinet Mount to be used with 2408 Rain Gauge.
Model 2408-50	Tip Rate Compensator: Replacement for the 2408 Rain Gauge.
Model 5101-00	*Extra Signal Cable, 3-Conductor, 24 AWG (price per ft./m).

**Note: If cable runs are longer than 250 ft. (76.2 m), an in-line lightning protection device is recommended.*