

Ser[LOG] Data Logger

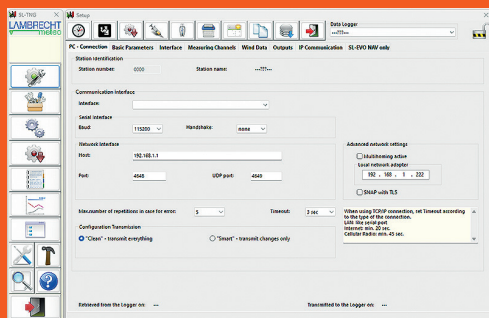


KEY APPLICATIONS:

- Environmental and agricultural networks
- Meteorology
- Universities
- National governments
- Industry
- Health resorts
- Aviation

The next generation of scalable meteorological communication platforms

Reliable data logging is crucial for an effective weather monitoring solution. With its next-level features, the advanced Ser[LOG] data logger sets new standards in data acquisition technology. With a variety of customizable configurations and state-of-the-art communication interfaces, it is the perfect solution for your measurement needs. Existing sensors, including those from other manufacturers, can be easily added and used with the included sensor library. The Ser[LOG] data loggers are ideal for setting up even large weather measurement networks.



SER[LOG] COMMANDER APP

The Commander app gives you maximum freedom to easily configure your Ser[LOG] data logger and customize your measurement tasks.

New Features:

WMO-compliant wind measurement and gust calculation

Optimized internal system monitoring for early problem detection

Maximum versatility with 250 simultaneous measurements

Dual modem support for reliable and seamless data transmission

Encrypt, protect and securely transfer data online with TLS 1.3

70 % less energy consumption than its predecessor in low-power mode

Detailed specifications

The Ser[LOG] collects your weather data (wind, precipitation, air temperature, relative humidity, air pressure and radiation) in a single place and provides real-time visualization. Real-time values can be stored in 1Hz interval (maximal 20 channels).

ID 00.95770.302000 SER[LOG] DATA LOGGER	
Signal input	2 status inputs
Output	2 potential-free, configurable relays; expandable up to 10 relays with a maximum of 8 Modbus relays
Interface	1x SDI-12; 5x RS 485; 6x RS 422; 4x RS 232; USB Device; USB Host; Ethernet
Operating conditions	-30...+70 °C; 5...95 % r. h. (non condensing)
Supply voltage	10...30 VDC
Current consumption	Low power mode: 12 mA at 12 V; from 34 mA (12 V) up to 200 mA (12 V) - configuration-dependent
Storage capacity	1 year in ring memory (8-Byte IEEE real format) - configuration-independent
Ethernet	100 MBit; connector RJ45
Dimensions/ Weight	135 x 135 x 72 mm/ approx. 0.9 kg
EMC standards/ Electrical safety	IEC 60945; RS422 and RS485 up to 2.5 kV isolated; all interfaces with 15 kV ESD protection
Cybersecurity	TLS 1.3: FTP / FTPs; email; MQTT; HTTP post; SSH: SFTP
Included in delivery	USB cable, Ser[LOG] Commander management app

Copyright photos: LAMBRECHT meteo, Treecha-; Blind Shot@Adobe stock

Features

SER[LOG] DATA LOGGER

- New processor, improved performance, reliability, and user experience
- Large sensor library, freely configurable and scalable
- Configuration of virtual arithmetic sensors
- Programming of free formulas (basic arithmetic)
- Individual linear correction configurable for each sensor

AEM ELEMENTS™ 360 SOFTWARE (OPTIONAL)

- Analyze real-time data from your station for better decision-making and planning
- Customize alerts to your specific thresholds and receive timely notifications when conditions change
- Edge-to-cloud data security protects your data and privacy and ensures accurate measurements



ELEVATE YOUR WEATHER MONITORING CAPABILITIES TODAY

To learn more about our innovative solutions, visit aem.eco or contact us at info@aem.eco