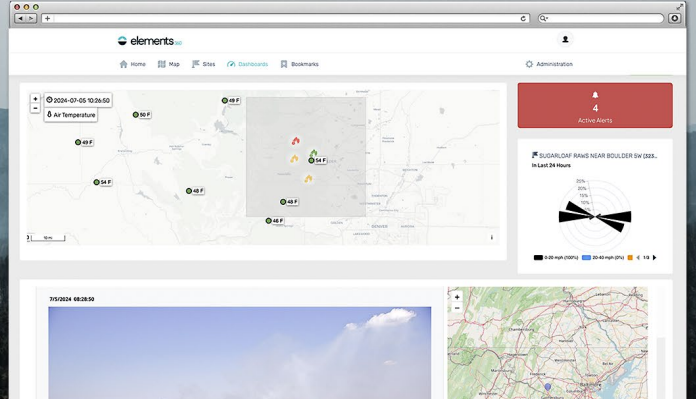


# AI Smoke Detection



## UNMATCHED SPEED AND ACCURACY

- The most advanced machine learning models, trained on millions of images
- Multi-camera triangulation methodology



**ASK ABOUT:  
PAN-TILT-ZOOM (PTZ) CAMERAS**

Our 360° HDPTZ cameras provide accurate, reliable data and technology to quickly capture smoke detections and improve situational awareness.

## Harness the power of AI to accelerate wildfire detection

Minutes matter in the early moments after a wildfire ignites. The time it takes for people to discover and report fires within a vast wildland can mean the difference between a minor incident and a full-blown catastrophe.

AEM Elements 360 with AI Smoke Detection continuously scans for wildfires around the clock. Using deep learning AI algorithms, it swiftly identifies smoke patterns to confirm and locate threats with unparalleled accuracy. Minutes after detection, AEM Elements 360 dispatches critical alerts to key decision-makers, enabling faster detection and swift intervention of wildfires before they escalate.

**< 1 minute**

Initial detection

**99%**

Daytime location accuracy

**24/7**

Surveillance

## Benefits:



Boost confidence in decisions by harnessing AI and intelligent alerts to quickly and precisely confirm wildfire ignitions during the critical early moments.



Reduce costs and delays associated with manual wildfire monitoring by continuously monitoring remote or inaccessible areas.



Minimize false alarms and optimize resource allocation for a more efficient and rapid wildfire response.



Strengthen wildfire resilience by integrating ignition detection, fire weather network, and fire forecast data into a single decision support application.

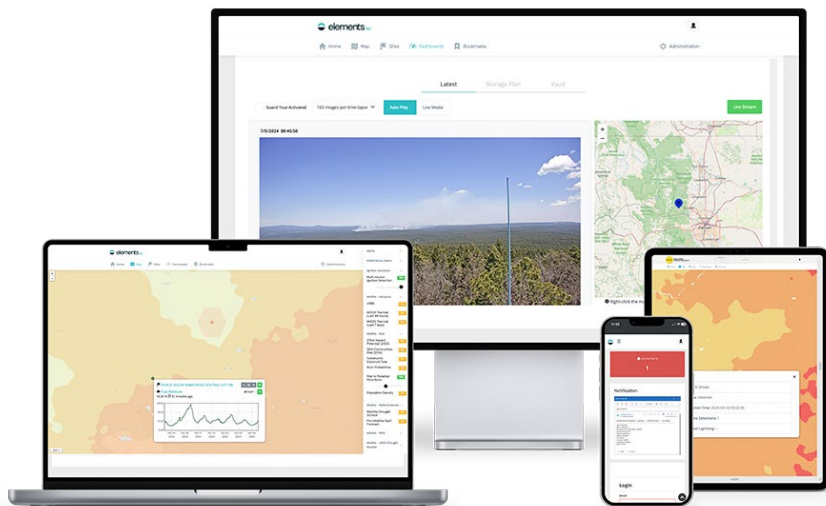
# Superior ignition detection to boost confidence and speed response

AEM Elements 360 is your wildfire command center for creating and receiving alerts, analyzing camera data, cross-checking multiple detection sources, and quickly taking action. Tailor your wildfire detection dashboard and consolidate all your data in a single application for a more complete view of ignitions and swift decision-making.



## The AEM Elements 360 difference:

- Seamless data integration:**  
 A single, future-proof application that easily consolidates multiple data sources and eliminates delays caused by fragmented information.
- Multi-dimensional insights:**  
 One application cross-checks AI smoke detection data with lightning, satellite hotspots, and more, boosting confidence in decisions and minimizing false alarms.
- Flexible, scalable platform:**  
 Our multi-hazard resilience platform combines sensing, data, and insights, converting weather data into actionable intelligence.



### LOCATION ESTIMATION AND DIRECTION

View map display with directional smoke information, including cardinal direction and degrees, alongside the location estimation GPS coordinates.

### EVENT INFORMATION

Analyze AI smoke detection information with other detection sources, such as nearby lightning strikes and satellite hotspots.

### REAL-TIME ALERTS

Customize rules to trigger an immediate detection alert and prompt key personnel to act via text message and email.

### RESPONSE STATUS

Acknowledge an alert has been seen and share response status to improve coordination across colleagues, agencies, and communities.

### WEATHER INFORMATION

Overlay real-time and forecast fire weather data for deeper insights to inform response and resource allocation.

### NIGHT DETECTION

Use infrared (IR) cameras to enable round the clock visual monitoring and timely detections any time of day.



## READY TO ELEVATE YOUR WILDFIRE DETECTION STRATEGY?

Reach out to us today at [info@aem.eco](mailto:info@aem.eco) to explore how AEM Elements 360 can help you make confident decisions, streamline response, and safeguard lives and property.