

Ser[LOG]-NAV



KEY APPLICATIONS

- Inland vessels
- Cruise ships
- Tankers
- Container ships
- Luxury yachts

Reliable data management for maritime applications

Ser[LOG]-NAV is a configurable and adaptable data acquisition and monitoring system. The data logger professionally records weather data, heading, course, and speed data and integrates with on-board computers and navigation systems to inform control of the ship. Hardware and software merge seamlessly and provide calculations like True Wind so you can protect passengers, crew, and cargo.



Key Features:

6 serial multifunctional interfaces for data input and data output

True wind calculations and multi-wind sensor support

Manual/automatic dual wind sensor selection with windward and leeward detection

Calculates additional parameters, including dewpoint, absolute humidity, and wet bulb temperature

Supports individual ship specific disturb sector correction

Alert system for up to 10 alert channels using multiple relays

THE STANDARD FOR MARITIME USE

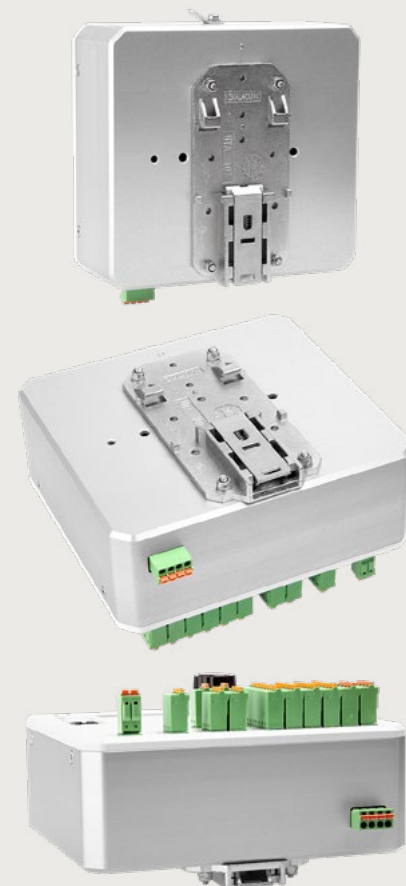
LAMBRECHT meteo, an AEM brand, has been NMEA 0183 certified since 1997. That means our wide range of on-ship weather stations and sensors for use at sea are held to the National Marine Electronics Association's standard for commercial shipping.

Detailed Specifications

SER[LOG]-NAV DATA LOGGER	
Signal input	2 status inputs
Output	2 potential-free, configurable relays
Communications interfaces	5 x RS 485 or 6 x RS 422 or 4 x RS 232 USB device and USB host
Operating conditions	-30 to +70 °C · 5 to 95 % r. h. (non-condensing)
Supply voltage	10...30 VDC
Current consumption	from 34 mA (12 V) up to 240 mA (12 V) depending on configuration
Storage capacity	1 year in ring memory (8-byte IEEE real format)
Ethernet	100Mbit, Connector RJ45
Dimensions / Weight	135 x 135 x 72 mm / approx. 0.9 kg
EMC standards / Electrical safety	IEC 60945; RS422 and RS485 up to 2.5 kV isolated; all interfaces with 15 kV ESD protection
Housing	Aluminum
Mounting bracket	For 35 mm DIN rail

Wherever your ship travels, the Ser[LOG]-NAV ensures a safe return.

- Built with high-quality, seawater-resistant materials
- Meets the NMEA 0183 standard for marine electronics.



ASK ABOUT: U[SONIC]WS6-NAV

Built to withstand harsh marine conditions, the scientific-grade u[sonic]WS6-NAV accurately measures 6 key weather parameters in one compact sensor.