

Post Wildfire Flood Monitoring



“After the devastating wildfires of October 2017, OneRain [an AEM brand] provided our region with an early flood warning system to alert emergency responders and citizens of potential risk to life and property from unknown threats such as flash floods and debris flows. In addition, the technology has also proved useful in the dry summer months. The real-time information on drought progression and fire weather risk has helped us better prepare to respond to subsequent wildfires that could impact the community.

— **Nathan Baskett,**
Hydrogeologist, Sonoma Water

Protect communities and infrastructure from flood risk after the fire

The increased risk to life and property doesn't end after a wildfire is out. With protective vegetation now gone and water-repellent soil, even modest rainfall can produce dangerous flash floods and debris flows with little warning near burn areas. AEM's industry-leading, Post Wildfire Flood Monitoring solutions can help you quickly mobilize after a wildfire, delivering accurate relevant data to reveal valuable insights, influence critical decisions, and protect threatened communities.

BENEFITS



Minimize loss by alerting first responders, emergency managers, and downstream communities of the imminent threat of flood and debris flows



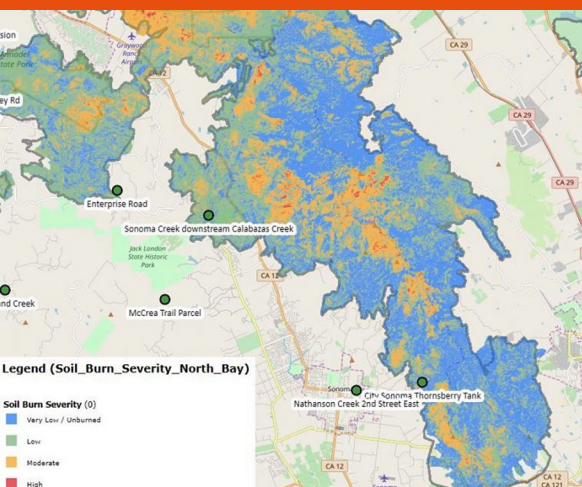
Rapidly deploy a complete, tailored solution of sensors, telemetry, cameras and data services to prepare for immediate storm events



Use accurate, real-time measurements from localized sensors to gain complete, on-the-ground picture of flood risks and improve alert lead times



Aid local resource managers to understand the impact to local water quality and plan for contaminants, conservation, and treatment processes



Flexible solutions to reduce post wildfire flood risk:

RAPID DEPLOYMENT SOLUTIONS

Quickly mobilize after the fire is out. Our rapid deployment solutions are easily installed and moved by your team or ours to promptly monitor risk from storm events with the greatest flexibility.

- Scientific grade accuracy and reliability in portable form
- Real-time data available to National Weather Service and other local agencies for quick, on-the-ground awareness
- Flexible packages include portable station, sensors, and software tools



LONG-TERM SOLUTIONS

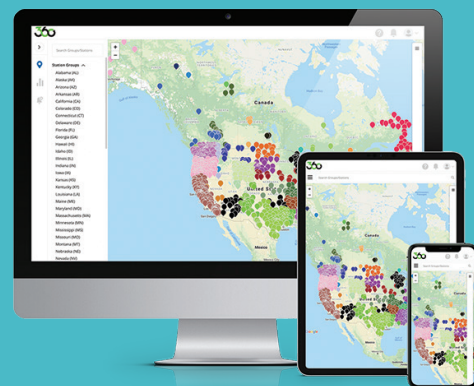
Wildfire-related flooding may continue for several years in a burn area. Our industry-leading, end-to-end solutions help ensure you protect people and property for years to come.

- Consult our team of experts on sensor selection and watershed assessment to configure the ideal system for your application
- Extend application to align with existing water monitoring systems, including water quality from the burn area
- Real-time camera integration to enhance situational awareness and reduce risk to personnel



AEM difference:

- Flexible, all-in-one solutions include sensors, communications, data collection and visualization, and alerting
- Quick and easy deployment to any location - with or without existing infrastructure
- Compact, rugged stations for harsh or remote environments
- Real-time, critical data delivery with scientific-grade accuracy
- Integrate Gauge-Adjusted Radar Rainfall (GARR) for increased precision and coverage
- Used by the Silver Jackets program, BAER teams, USGS and BIA



COMPLETE END-TO-END SOLUTION

AEM provides all of your post-wildfire flood monitoring needs in one seamless solution, including sensors, telemetry, software, basin modeling, expertise, installation and maintenance.